

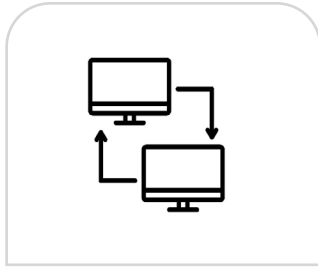
# OCT 11 – NOV 21, 2022

## Seattle to Lisbon



**NCL** NORWEGIAN  
CRUISE LINE®

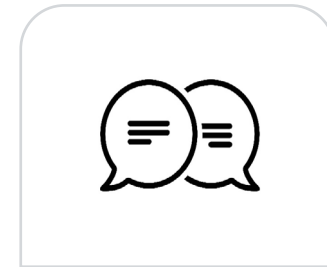
# Housekeeping



Tech Troubles?  
Try logging out and in



Adjust your view with the  
“View” icon on the top. If you  
are on a browser, you may  
not have this option.



Submit questions in  
the Q&A box below



- One of the originators of modern cruising
- The youngest fleet of any North American Cruise Line
- Pioneered “Freestyle Cruising” offering guests the chance to try multiple restaurants, dine when they want, with whom they want
- Features more types of cuisine than any other cruiseline
- World-class entertainment – Rock You Tonight, World Beat

# The Norwegian Sun

- Total Guests: 1,936
- Total Crew: 906
- Guest to Staff Ratio: 1 to 2.13
- Space to Guest Ratio: 40.44
- Refurbished: 2018



A couple is seated in a modern lounge area on the deck of a cruise ship. They are sitting in dark blue armchairs around a small round table. The woman is wearing a yellow top and the man is wearing a light blue shirt. They are looking at each other and talking. The background shows a large window with a view of the ocean and a sunset. The sun is low on the horizon, creating a warm, golden glow. The sky is a mix of orange and blue. The ship's structure, including a large white pillar and various beams, is visible in the foreground and background. The overall atmosphere is relaxed and luxurious.

ABOARD A REIMAGINED  
NORWEGIAN SUN

# Itinerary & Weather

Date	Port	Temperature (°F)			Precipitation	Humidity
		Avg	High	Low	(Inches)	
Tuesday, October 11	Seattle, WA	54	60	48	3	–
Wednesday, October 12	Astoria, OR	53	61	44	6	91
Thursday, October 13	At Sea					
Friday, October 14	At Sea					
Saturday, October 15	Catalina Island, CA	63	68	59	0	81
Sunday, October 16	At Sea					
Monday, October 17	Cabo San Lucas, Mexico	79	90	68	1	69
Tuesday, October 18	Mazatlan, Mexico	81	89	73	–	93
Wednesday, October 19	Manzanillo, Mexico	83	88	77	–	90
Thursday, October 20	Acapulco, Mexico	83	89	77	–	92
Friday, October 21	Huatulco, Mexico	79	86	71	4	–
Saturday, October 22	Puerto Quetzal, Guatemala	68	76	60	7	–
Sunday, October 23	Acajutla, El Salvador	82	88	76	8.8	86
Monday, October 24	San Juan del Sur, Nicaragua	78	–	–	18	–
Tuesday, October 25	Puntarenas, Costa Rica	81	86	76	10	96
Wednesday, October 26	At Sea					
Thursday, October 27	Panama Canal (Full Transit)	80	86	74	18	88
Friday, October 28	Cartagena, Colombia	82	86	78	9	89
Saturday, October 29	At Sea					
Sunday, October 30	At Sea					



# Itinerary & Weather

Date	Port	Temperature (°F)			Precipitation	Humidity
		Avg	High	Low	(Inches)	
Monday, October 31	Miami, FL	79	85	72	7	87
Tuesday, November 1	At Sea					
Wednesday, November 2	At Sea					
Thursday, November 3	New York (Manhattan), NY	48	54	41	4	72
Friday, November 4	Newport, RI	46	53	38	5	–
Sat-Wed, November 5-9	At Sea					
Thursday, November 10	Horta, Azores	63	65	60	4	85
Friday, November 11	Praia da Vitoria, Azores, Portugal	62	66	58	5.4	82
Saturday, November 12	Ponta Delgada, Portugal	62	65	59	4	81
Sunday, November 13	At Sea					
Monday, November 14	Santa Cruz, La Palma, Canary Islands	68	74	63	2	–
Tuesday, November 15	Santa Cruz, Tenerife, Canary Islands	68	87	50	–	66
Wednesday, November 16	Las Palmas, Grand Canary Island, Canary Islands	69	73	64	1	74
Thursday, November 17	At Sea					
Friday, November 18	Gibraltar, UK Territory	62	66	57	6	83
Saturday, November 19	Malaga, Spain	60	67	52	–	83
Sunday, November 20	Cadiz, Spain	62	66	57	6	83
Monday, November 21	Lisbon, Portugal	57	63	51	–	86



# Inclusions & Bonus Perks

FREE Transfers from Vancouver to Seattle (guests departing from Vancouver, Canada)

FREE AIR from Lisbon to Vancouver or Seattle (or other select gateways)

FREE Premium Beverage Package & Open Bar (for guests who opted-in)

- C\$5,000 value/per person (gratuities extra cost)

FREE Specialty Dining Package (for guests who opted-in)

- 4 Specialty Dining (Inside & Oceanview. Gratuities at extra cost)
- 6 Specialty Dining (Balcony. Gratuities at extra cost)

FREE Prepaid Onboard Gratuities for Crew (value of C\$1,660/couple)

FREE WiFi – 600 minutes/per person (Oceanview & higher categories)

FREE US\$200 Shipboard Credit/cabin

FREE Shore Excursion Credits

- (\$50/cabin/port. Restrictions apply)
- (Oceanview & higher categories)

FREE ALL Taxes & Fees

PLUS Travel Insurance‡ (Trip Cancellation & Trip Interruption)

NO AGE LIMIT | PRE-EXISTING CONDITION WAIVED | NO MEDICAL QUESTIONNAIRE

PLUS 2 Nights Post Cruise Package (for guests who opted-in)



# Beverage Package & Open Bar

## **FREE Premium Beverage Package & Open Bar** (for guests who opted-in)

- Guest 1-2 must be at least 21 years of age at time of sailing to qualify for the Premium Beverage Package. Guests under 21 will receive the pop package  
Eligible guests are entitled to two beverages per person per transaction
- 20% Gratuities at extra cost based on a retail value of US\$99 per person, per day
- \$19.80 USD per person per day gratuities
- Guest's cheque may reflect applicable VAT and/or taxes for certain ports or itineraries

## **Beverage Package Includes**

- Includes a variety of spirits and cocktails, wines by the glass and bottled or draft beer up to \$15 USD retail price
- Fountain pop, juice, and non-alcoholic beer
- A 20% discount will be given on bottles of wine (champagne and sparkling included), Wine and Spirit Experiences, tastings or Flights purchased on board

# Beverage Package & Open Bar

## **Beverage Package Does Not Include**

- Wine and Spirit Experiences
- Tastings or Flights
- Starbucks, Ice Bars
- Room service, package sales
- Bottled water
- Ship specific promotions or beer buckets
- Designated super premium brands (subject to change)
- Bottled wine
- Mini bar purchases
- Fresh squeezed juices
- Wine dispenser
- Energy drinks
- Vending machines

# Beverage Package & Open Bar

## **Pop Package**

- Guests who receive the Pop Package may obtain fountain pop at any bar, lounge or restaurant throughout the duration of the cruise
- Guest is responsible for gratuities of \$1.59 USD per person per day prior to cruise

# Shore Excursions

## Through Norwegian Cruise Line

- US\$50 Shore Excursion Credit per port (Oceanview & Higher Categories)
- Offer is applicable to first guest on the cruise reservation
- Receive free shore excursions priced at \$50 or less
- Or receive \$50 in Shore Excursion Credits to apply against shore excursions priced greater than \$50
- \$50 Shore Excursion Credit is applicable to all tours, including debarkation tours
- In the event the tour is less than the value of the credit the \$50 Shore Excursion Credit will be adjusted to match the tour value
- The first guest may redeem the promotion of \$50 Shore Excursion Credit on more than one shore excursion per port

# Life Onboard



**Mandara Spa & Salon**



**Splash Academy**



**Stardust Lounge**



**Sun Casino**



**Rock You Tonight**



**World Beat**



# Included Dining



**Sports Bar**



**Four Seasons**



**Garden Café**



**Seven Seas**



**The Great Outdoors**



**Topsiders Bar & Grill**



**Room Service**

# Specialty Dining



**Los Lobos Cantina**



**Moderno Churrascaria**



**Atrium Café**



**Le Bistro**



**Cagney's Steakhouse**



**La Cucina**



**Teppanyaki**



**Sushi Bar**

# Bus Transfer: Vancouver to Seattle

- Departure Date: Tuesday, October 11, 2022
- Pick-up Location: Hyatt Regency Hotel Downtown Vancouver 655 Burrard St., Vancouver
- Meeting Time: 7:00 am
- Departure Time: 7:30 am
- Arrival Time: Approximately at 11:30 am
- Seattle Cruise Terminal: Bell Street at Pier 66; 2225 Alaskan Way, Seattle



# Transfer – For Guests returning home to Vancouver after the cruise

- Departure Date: Monday, November 21, 2022
- Pick-Up Location: Outside the cruise terminal. A representative will meet you holding Cruise Connections signage. Please ensure to bring your luggage with you
- Meeting Time: 8:45 am
- Departure Time: 9:00 am. Travel time from the Cruise Terminal to the Airport is approximately 20 minutes.
- Drop Off Location: Lisbon Airport.

# Transfer – For Guests on the 2-night Post Cruise Package

- Departure Date: Monday, November 21, 2022
- Pick-Up Location: Outside the cruise terminal. A representative will meet you holding Cruise Connections signage. Please ensure to bring your luggage with you.
- Meeting Time: 9:15 am
- Departure Time: 9:30 am. You will have a 2 hour tour of Lisbon
- Drop Off Location: NH Collection Lisboa Liberdade
  - Rooms will be available for check-in between 2pm-3pm

# Air Tickets & Seat Assignments

- Air tickets - Will be issued the week of Sept 26th
- Seat Assignments - Not available until 7 days before your flight departure

# Exclusive 2-Nights Post Cruise Program

Lisbon | Nov 21 – Nov 23, 2022

This program includes:

- Coach Transfer from the Ship to the Hotel
- An Introductory City Tour of Lisbon
- A 2-Night Hotel Stay, complete with breakfast at the [Deluxe NH Collection Hotel](#) on Nov 21 & Nov 22
- Trip Cancellation/Interruption insurance
- All Taxes and Fees
- Fly back from Lisbon to Canada or the U.S on Nov 23



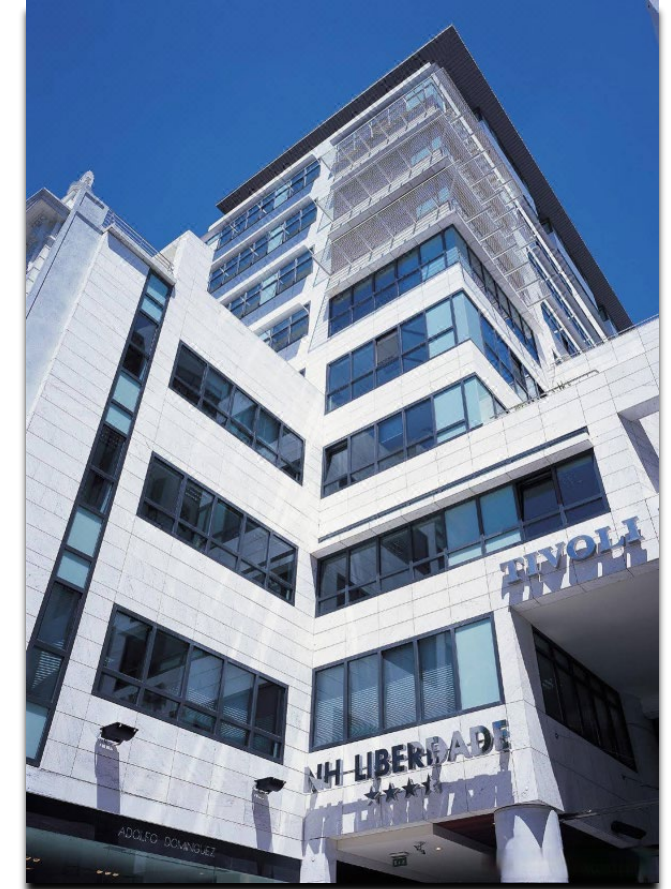
*“As the capital of Portugal, Lisbon is a Must-See... A city full of charisma with great weather all year round, a foodie’s paradise, a combination of enchanting old neighbourhoods and a vibrant city.*

*Make sure you try the famous “Pastéis de Nata” (custard tart), it’s hard to stop at one!”*

# The NH Collection Lisboa Liberdade,

A **4-Star Hotel** located right on Avenida de Liberdade, an elegant tree-lined street filled with cafés and designer shop

Within 15 minutes' walk of a host of city sights plus bars, restaurants and Fado houses



# Transfer – For Guests on the 2-Night Post Cruise Package. Hotel to Lisbon Airport

Pick-up Location: NH Collection Hotel

## For Guests Returning to Seattle

- Departure Date: Wednesday, November 23, 2022
- Meeting Time: 4:15 am
- Departure Time: 4:30 am

## For Guests Returning to Vancouver

- Departure Date: Wednesday, November 23, 2022
- Meeting Time: 7:45 am
- Departure Time: 8:00 am

Travel time from the Hotel to the Airport is approximately 30 minutes.

# Preparing for Your Voyage

## Online Check-In Process

- Available beginning at 21 days prior to sailing
- Must be completed no later than (4) days prior to sailing

## Online Check-In Requirements Checklist:

- Ship, sailing date, and cruise line reservation number
- Passport, valid for at least 6 months after the final day of travel
- Emergency Contact and Information
- A valid credit card to register for onboard purchases
- Flight Information
- A camera-enabled mobile device

## Once you have completed Online Check-In, you will receive:

- A Boarding Pass which you may choose to print and bring with you or
- Save to a mobile device
  
- For more details, visit: <https://www.ncl.com/ca/en/prepare-for-your-cruise/2021#online-check-in>



Package Fare

Airfare

Included

Insurance **Included**

\$ 0.00

Total Amount (CAD)  
Total Paid  
**Paid in Full**  
Penalties Start 8/3/2022

### CRUISE DETAILS

Cruise Line	NORWEGIAN CRUISE LINE
Ship	<a href="#">NORWEGIAN SUN</a>
Itinerary	41 NIGHT SEATTLE TO LISBON
Start Date	10/11/2022 (41 Nights)
Dining	Any Time Dining
Category / Cabin No.	<a href="#">BA - MID-SHIP BALCONY STATEROOM / NO. 0235</a>
Bedding	QUEEN BED
Cruise Line Res #	<b>49801234/ 49802345</b>

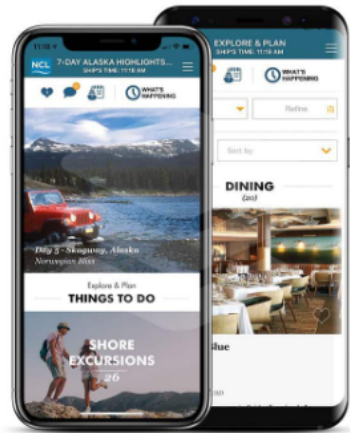
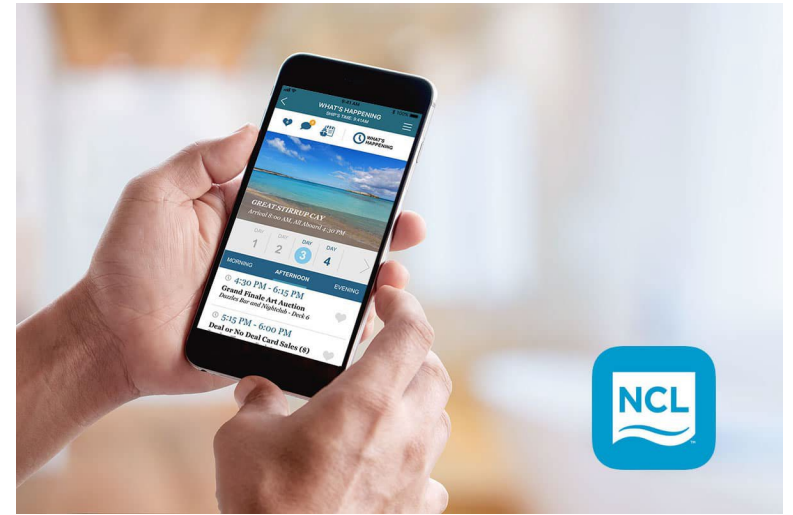
**Your Reservation Number Here**



# Norwegian App

<https://www.ncl.com/ca/en/apps>

Click the link above, scroll down the page and click on one of the App Store icon to download



## benefits

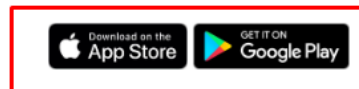
### Before Your Cruise

- Purchase onboard gifts including wine, flowers and treats
- Check in online and save time at the pier
- On the day of departure, access your E-Docs and directions to the pier

### During Your Cruise

- Review your account and track onboard purchases
- Get a daily schedule of what's happening on the ship
- Learn about our CruiseNext program
- Review helpful disembarkation information including immigration and Easy Walk-off details
- Call and message guests on board including Group Chat\*

\*Calling and Messaging Package has a nominal one-time fee for making unlimited onboard calls and messages during your cruise.



Download the Cruise Norwegian mobile app, available on the entire Norwegian fleet! Cruise Norwegian includes an industry first "Pre-Cruise" mode which allows you to pre-book your onboard activities, dining reservations, shore excursions, entertainment, and view your vacation itinerary and summary, all before you ever step foot on a Norwegian ship. Once you get onboard, all of your reservations, bookings, and favourites would be seamlessly transferred to the ship, where you can use the communications feature to chat and message with other guests onboard, view your account and onboard purchases, get a daily schedule of what's happening on the ship, and so much more! The Cruise Norwegian app is available for download on the App Store and Google Play.

# Embarkation Requirements

Proof of completed series of one-dose or two-dose vaccination regimen. Please visit [www.ncl.com/sail-safe](http://www.ncl.com/sail-safe) for a full list of accepted vaccines and additional information.

OR

2. Proof of a negative COVID-19 antigen or NAAT test (i.e., PCR) taken within three days of the embarkation date.

# Health Requirements by Port

# COLOMBIA

AGE	VACCINATED	UNVACCINATED
> 18 years	<p>Proof of completed series of one-dose or two-dose primary vaccination regime at embarkation.</p> <p>Or</p> <p>Provide proof of one of the following:</p> <ol style="list-style-type: none"><li>1. Negative COVID-19 antigen test no later than 48 hours before the embarkation date</li><li>2. NAAT test (i.e., PCR) no later than 72 hours before the embarkation date</li></ol>	<p>Provide proof of one of the following:</p> <ol style="list-style-type: none"><li>1. Negative COVID-19 antigen test no later than 48 hours before the embarkation date</li><li>2. NAAT test (i.e., PCR) no later than 72 hours before the embarkation date</li></ol>

# COSTA RICA

AGE	VACCINATED	UNVACCINATED
> 5 years	Proof of completed series of one-dose or two-dose primary vaccination regime at embarkation. The last doses must have been administered at least 14 days prior to departure.	Unable to go ashore

# SPAIN (Including Canary Islands)

AGE	VACCINATED	UNVACCINATED
> 18 years	Proof of up-to-date vaccination regimen, including booster***, at embarkation.	Provide proof of one of the following: 1. Negative COVID-19 antigen test within two days of the embarkation date 2. Negative NAAT test (i.e., PCR) within three days of embarkation date 3. COVID-19 Recovery Certificate*  Unvaccinated guests may be required to test occasionally throughout the voyage if deemed necessary by Spanish Authorities. Guests would be responsible for the cost**

\*\*\* All guests over the age of 18, whose primary COVID-19 vaccination will be beyond 270 days at the time of disembarkation from their voyage, must have a COVID-19 booster prior to embarkation.

# Visa Requirements

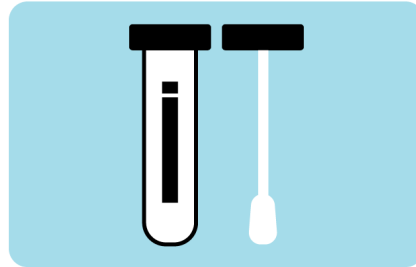
- U.S and Canadian Passport Holders do not require any visa for the countries included in the itinerary
- It is the guest's responsibility to obtain any required travel documentations

# Health Protocols Onboard



## Vaccination Requirements

Guests ages twelve and over will be allowed to board unvaccinated. Unvaccinated guests age twelve and over will be required to show proof of a medically supervised negative PCR or Antigen test taken no more than 72 hours prior to embarkation.



## Testing & Pre-Embarkation Protocols



Masks are optional on all sailings.

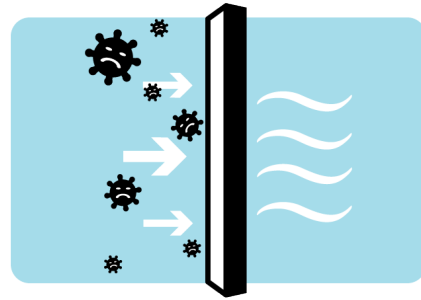


# Health Protocols Onboard



## Continuous Ship-Wide Cleaning & Disinfection Measures

Comprehensive enhanced cleaning and sanitation protocols, using EPA approved disinfectants, have been implemented throughout the cruise experience.



## Upgraded Medical-Grade Air Filters

NCL is strategically installing medical-grade air filters of the highest filtration grade, MERV 13 or HEPA, capable of removing 99.9% of airborne pathogens, including COVID-19, and implementing new bi-polar ionization technology.



## Enhanced Onboard Medical Teams & Health Services

NCL has improved their onboard medical capabilities with additional staffing relative to capacity and enhanced facilities including new and upgraded equipment and onshore medical institution partnerships.



## Dedicated Public Health Officer

All ships will sail with a dedicated Public Health Officer on board that will oversee the day-to-day sanitation and cleanliness of all public areas and accommodations.

# Arriving to Canada

<https://arrivecan.cbsa-asfc.cloud-nuage.canada.ca/en/welcome>

Must be completed within 72 hours of arrival to Canada



# Our Unique Travel Insurance Program

- ✓ No age limit
- ✓ Pre-existing condition waived
- ✓ No medical questionnaire

Provided by:



# Q & A